



DATE:

TAG:

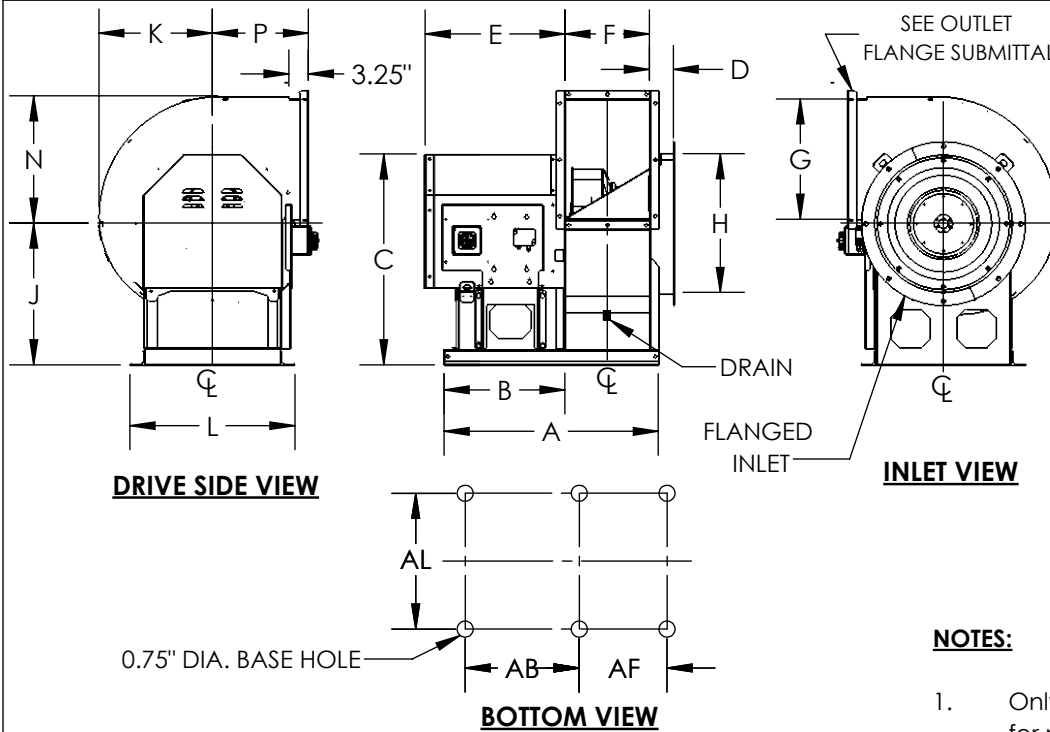
JOB:

PROJECT:

COMPANY:

SALES PERSON:

UVS2, CLASS-2, ARRANGEMENT-4
UTILITY VENT SET FOR UL GREASE EXHAUST (400F), SIZES 122-330

**STANDARD CONSTRUCTION:**

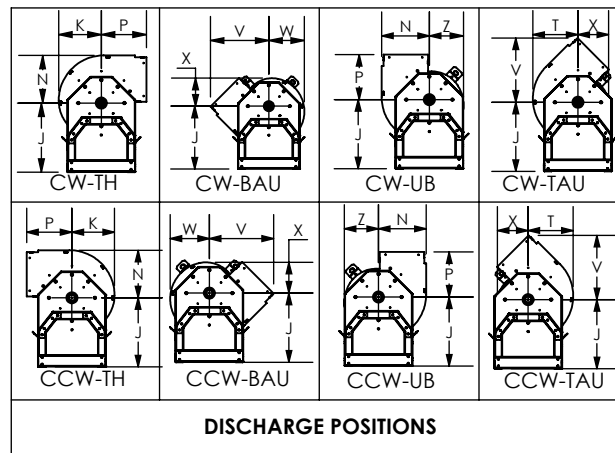
1. Steel Wheel
2. Housing and Pedestal are Welded and Coated
3. Weather Cover
4. Pre-wired NEMA 3R Switch
5. Housing Drain 3/4" NPT
6. Access Door (Bolted or Hinged)
7. Flanged Inlet and Outlet
8. Shaft Seal (Ceramic)
9. High Temperature Paint

OPTIONAL ACCESSORIES:

1. Outlet stack
2. Grease Containment with optional Absorbent

NOTES:

1. Only holes at corners are required for mounting

**DIMENSIONAL DATA**

SIZES	"A" (WIDTH)											B	C	D	E	"F" (WIDTH)										
	100%	95%	90%	85%	80%	75%	70%	65%	60%	55%	50%					100%	95%	90%	85%	80%	75%	70%	65%	60%	55%	50%
122	27.25	27.13	26.94	26.81	26.63	26.44	-	-	-	-	-	15.88	26.38	4.13	18.75	9.88	9.75	9.56	9.44	9.25	9.06	-	-	-	-	-
135	28.25	28.13	27.94	27.75	27.56	27.38	27.19	-	-	-	-	15.88	27.25	4.13	18.75	10.88	10.75	10.56	10.38	10.19	10.00	9.81	-	-	-	-
150	29.44	29.25	29.06	28.88	28.69	28.44	28.25	28.06	27.88	-	-	15.88	29.63	4.13	18.75	12.06	11.88	11.69	11.50	11.31	11.06	10.88	10.69	10.50	-	-
165	34.88	34.69	34.44	34.25	34.06	33.81	33.56	33.38	33.13	32.94	-	20.13	32.13	4.13	23.31	13.25	13.06	12.81	12.63	12.44	12.19	11.94	11.75	11.50	11.31	-
182	35.69	35.50	35.25	35.00	34.72	34.50	34.25	34.00	33.75	33.50	33.25	20.13	35.13	4.13	23.31	14.06	13.88	13.63	13.38	13.09	12.88	12.63	12.38	12.13	11.88	11.63
200	37.00	36.75	36.50	36.25	36.00	35.75	35.50	35.13	34.88	34.63	34.38	20.13	38.50	4.13	23.31	15.38	15.13	14.88	14.63	14.38	14.13	13.88	13.50	13.25	13.00	12.75
222	38.75	38.50	38.25	37.88	37.63	37.38	37.00	36.75	36.38	36.13	35.75	20.13	42.06	4.13	23.31	17.13	16.88	16.63	16.25	16.00	15.75	15.38	15.13	14.75	14.50	14.13
245	40.75	40.50	40.13	39.88	39.50	39.13	38.88	38.50	38.13	37.88	37.63	20.50	45.50	4.13	25.75	18.75	18.50	18.13	17.88	17.50	17.13	16.88	16.50	16.13	15.88	15.63
270	44.25	44.00	43.63	43.25	43.00	42.50	42.13	41.75	41.38	41.00	40.75	22.13	49.63	4.13	28.63	20.63	20.38	20.00	19.63	19.38	18.88	18.50	18.13	17.75	17.38	17.13
300	47.13	46.75	46.38	46.00	45.63	45.13	44.75	44.38	44.00	43.50	43.25	22.13	55.44	4.13	28.63	23.00	22.63	22.25	21.88	21.50	21.00	20.63	20.25	19.88	19.38	19.13
330	49.38	49.00	48.50	48.13	47.75	47.25	46.75	46.38	45.88	45.50	45.13	22.13	60.63	4.13	28.63	25.25	24.88	24.38	24.00	23.63	23.13	22.63	22.25	21.75	21.38	21.00

ALL DIMENSIONS ARE IN INCHES, WEIGHTS ARE APPROXIMATE AND DOES NOT INCLUDE DRIVES OR ACCESSORIES.

DIMENSION TABLE CONTINUE ON THE NEXT PAGE.

REVISION:

FORM:

REPLACES:



DATE: TAG:
 JOB:
 PROJECT:
 COMPANY:
 SALES PERSON:

UVS2, CLASS-2, ARRANGEMENT-4
 UTILITY VENT SET FOR UL GREASE EXHAUST (500F), SIZES 122-330

DIMENSIONAL DATA

SIZES	G	H	J	K	L	N	P	T	V	W	X	Z	AL	AB
122	13.06	16.75	18.00	12.88	24.00	14.38	13.50	13.63	19.19	11.81	9.25	10.31	22.00	14.38
135	14.38	18.38	18.38	14.19	24.00	15.81	14.25	15.00	20.75	13.00	10.19	11.38	22.00	14.38
150	15.88	20.38	20.00	15.69	24.00	17.56	14.75	16.63	22.31	14.38	11.25	12.56	22.00	14.38
165	17.56	22.38	21.63	17.19	26.50	19.25	15.50	18.19	24.00	15.75	12.31	13.75	24.50	18.63
182	20.06	23.13	23.63	18.94	27.50	21.19	16.00	20.06	25.75	17.31	13.56	15.13	25.50	18.63
200	22.00	25.25	25.75	20.69	30.00	23.19	17.25	21.94	28.06	18.94	14.81	16.56	28.00	18.63
222	24.50	28.00	28.25	23.00	32.00	25.75	18.75	24.38	30.94	21.06	16.44	18.38	30.00	18.63
245	27.00	30.88	30.75	25.25	34.00	28.31	20.25	26.75	33.79	23.13	18.00	20.13	32.00	19.00
270	29.75	33.88	33.75	27.75	37.50	31.13	22.25	29.44	37.25	25.44	19.81	22.13	35.50	20.63
300	32.88	37.69	37.63	30.81	40.50	34.56	24.13	32.69	41.00	28.25	22.00	24.63	38.50	20.13
330	36.19	41.44	41.00	33.81	44.00	37.94	26.50	35.88	45.00	30.94	24.13	27.00	42.00	20.13

SIZES	"AF" (WIDTH)											MAX.	MAX.	MAX.
	100%	95%	90%	85%	80%	75%	70%	65%	60%	55%	50%	WT. (lbs)	RPM	MTR.
122	9.88	9.75	9.56	9.44	9.25	9.06	-	-	-	-	-	146	4700	213T
135	10.88	10.75	10.56	10.38	10.19	10.00	9.81	-	-	-	-	160	4300	215T
150	12.06	11.88	11.69	11.50	11.31	11.06	10.88	10.69	10.50	-	-	180	3850	215T
165	13.25	13.06	12.81	12.63	12.44	12.19	11.94	11.75	11.50	11.31	-	225	3500	256T
182	14.06	13.88	13.63	13.38	13.09	12.88	12.63	12.38	12.13	11.88	11.63	261	3000	256T
200	15.38	15.13	14.88	14.63	14.38	14.13	13.88	13.50	13.25	13.00	12.75	328	2750	256T
222	17.13	16.88	16.63	16.25	16.00	15.75	15.38	15.13	14.75	14.50	14.13	382	2450	256T
245	18.75	18.50	18.13	17.88	17.50	17.13	16.88	16.50	16.13	15.88	15.63	448	2200	286T
270	20.63	20.38	20.00	19.63	19.38	18.88	18.50	18.13	17.75	17.38	17.13	532	2000	324T
300	24.00	23.63	23.25	22.88	22.50	22.00	21.63	21.25	20.88	20.38	20.13	805	1800	324T
330	26.25	25.88	25.38	25.00	24.63	24.13	23.63	23.25	22.75	22.38	22.00	947	1650	326T

ALL DIMENSIONS ARE IN INCHES, WEIGHTS ARE APPROXIMATE AND DOES NOT INCLUDE DRIVES OR ACCESSORIES.

REVISION:

FORM:

REPLACES: